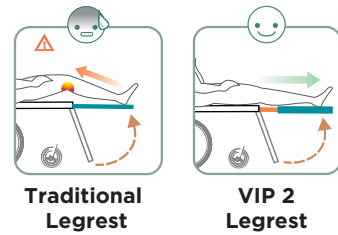


OPTIONS

Axle-Travelling Elevating Legrest

The VIP 2 footrest stretches automatically during elevation, which allows the users' legs to extend freely and thus eliminate compression on the knees.



Adjustable Curved Headrest with Sideways Adjustment



Tension Adjustable Seat



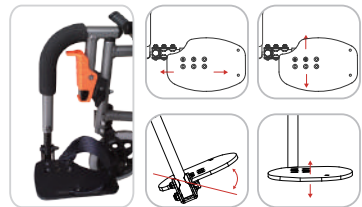
Flip-back Hemi Armrest Adjustable in Height



20" Rear Wheel



20" Quick Release Rear Wheel



90° Straight Legrest with Multiple Directional Adjustable Footplates



Angle Adjustable Footplates



Cane Holder



IV Pole Holder



Oxygen Tank Holder

VIP 2 Specifications

Seat Width*	16/18*
Seat Depth (inch)	16/18
Seat Width (mm)	400/450
Seat Depth (mm)	410/460
Seat Height (mm)	465/490
F/R wheels	F: 6"/7" R: 14"/20
Backrest Height (mm)	490/540
Armrest Height (mm)	210-270
Calf Length (mm)	380-480
Total Weight (kg)	22.3-23.4
Max. User Weight (kg)	115
Overall L x W x H (mm)	Min. 1050*640*980 Max. 1100*730*980
Overall Folded L x W x H (mm)	Min. 790*380*700 Max. 840*420*700

Remark: Karma reserves the right to modify information herein without further notice. " / " means optional; " - " means adjustable
±1cm ± 0.5kg 111501000123 Rev.02 Jun.2020

karma

A Better Wheelchair, A Better Fit



Manual Wheelchair

VIP 2

Tilting, Reclining, and Foldable

Mobility should never be limited by distance. VIP 2 allows clients with weak trunk control to traverse like everyone else. The fantastic Tilt-in-Space and reclining functions provide the optimal pressure relief and positioning on the chair. Its foldable and lightweight design also makes it the best chair to travel with.

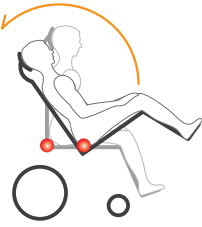


14" Rear Wheel



KARMA MEDICAL PRODUCTS CO., LTD.
T +886-5-206 6688
F +886-5-206 7788
Email: globalsales@karma.com.tw

karma
www.KarmaMedical.com



The center of gravity shifts between front and rear wheels.
● indicates COG of the chair



Tilt up to 35°

Weight Shifting With Comfort

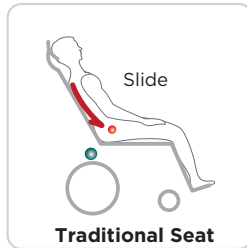
Karma VIP 2 is designed to avoid the feeling of anxiousness that happens when going in and out of tilt. The unique weight shifting system allows the center of gravity to travel between front and rear wheels while tilting, providing the steadiest balance possible and a great sense of security for the user.

Anti-Sliding Reclining System

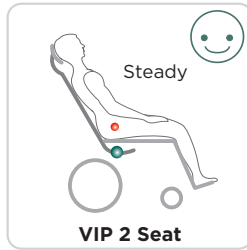
Sliding has always been one of the greatest concerns for people in a standard reclining chair. VIP 2 solves this problem by locating the reclining pivot points of the chair close to the user's hip joints, and synchronizing the motion of the body with the chair. This minimizes the user's degree of sliding and shear force while reclining.



Recline up to 30°



Traditional Seat



VIP 2 Seat

● indicates human hip joint
● indicates the reclining pivot point of the chair



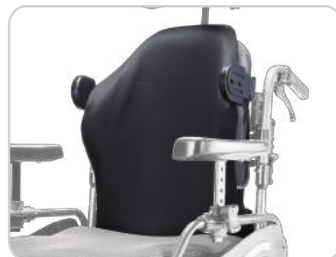
Foldable and Durable

VIP 2 is light, foldable and easy to fit into the trunk of a car. The lateral push-bar strengthens the durability of this foldable chair and makes it more efficient to push and navigate.

Modularized Design, Easy to Upgrade

The tilt only chair is equipped with an Angle Adjustable Backrest: -5°/ 0°/ 5°/ 10°/ 15°.

It is also designed to be very friendly for after-market backrest systems, such as Jay and Matrix.



"... It's easy to fit into the trunk of a rental car and allows my ALS wife to travel on planes and use rental cars, even though she can't hold her upper body upright in a normal wheelchair..."

Customer Testimonial, amazon.com



Strap Tension Adjustable Backrest

By adjusting each strap, the backrest can be best fitted to the user, especially for those who have a hunch back. It helps to maximize functions and increase sitting tolerance.



Multiple Dimension Choices to Fit your Needs

The back height can be customized from 49cm to 54 cm.
The seat to floor height can be either 49 cm (with 7" front wheel) or 46.5 cm (with 6" front wheel).

Ergonomic Armrest

The armrests are height adjustable, detachable, and ergonomic.



Curved Headset

The curved headset can be adjusted horizontally, vertically, anteriorly, and posteriorly. The head pad angle can be adapted based on user's head curve.

J-Hook

Provides better care. No need to lean over to push a recliner or tilting wheelchair. The J-hook is attendant friendly and is designed to avoid "during care injury".



Detachable Footrests

The legrest can be swung away with one hand in one second. This design completely clears up leg space, which provides the user a safer frontward transfer.

